



Marie Skłodowska-Curie
Innovative Training Network
“HypoTRAIN”

**Hyporheic Zone Processes – A training network for enhancing
the understanding of complex physical, chemical and
biological process interactions**

Grant Agreement No. 641939

Deliverable D5.1

Dataset of Joint Study at River Erpe

Dissemination Level of Deliverable:

PU	Public	X
CO	Confidential, only for the members of the consortium (including the Commission Services)	
CI	Classified, as referred to in Commission Decision 2001/844/EC	

Dataset of Joint Study at River Erpe

In June 2016 the 1st Joint Field Experiments took place in Berlin at the River Erpe. Hosted by the IGB in Berlin all ESRs collaborated for three weeks of field work at a lowland river impacted by treated wastewater. Information about resulting data was gathered in a google maps overview. This ensured a quick overview on research locations and related meta-data. Figure 1 shows this for one station of the so-called large-scale-attenuation-experiment (LSA). Besides a name for the location methods and techniques applied as well as resulting data are listed. Furthermore, the contact person is named. By that all important meta-data are available in a quick-and-easy-way. The map is available under:

<https://www.google.com/maps/d/viewer?mid=1Lr4WXOqpiKFMox-vLKnTa6uFmoY&ll=52.471354246004054%2C13.624173049999968&z=13>

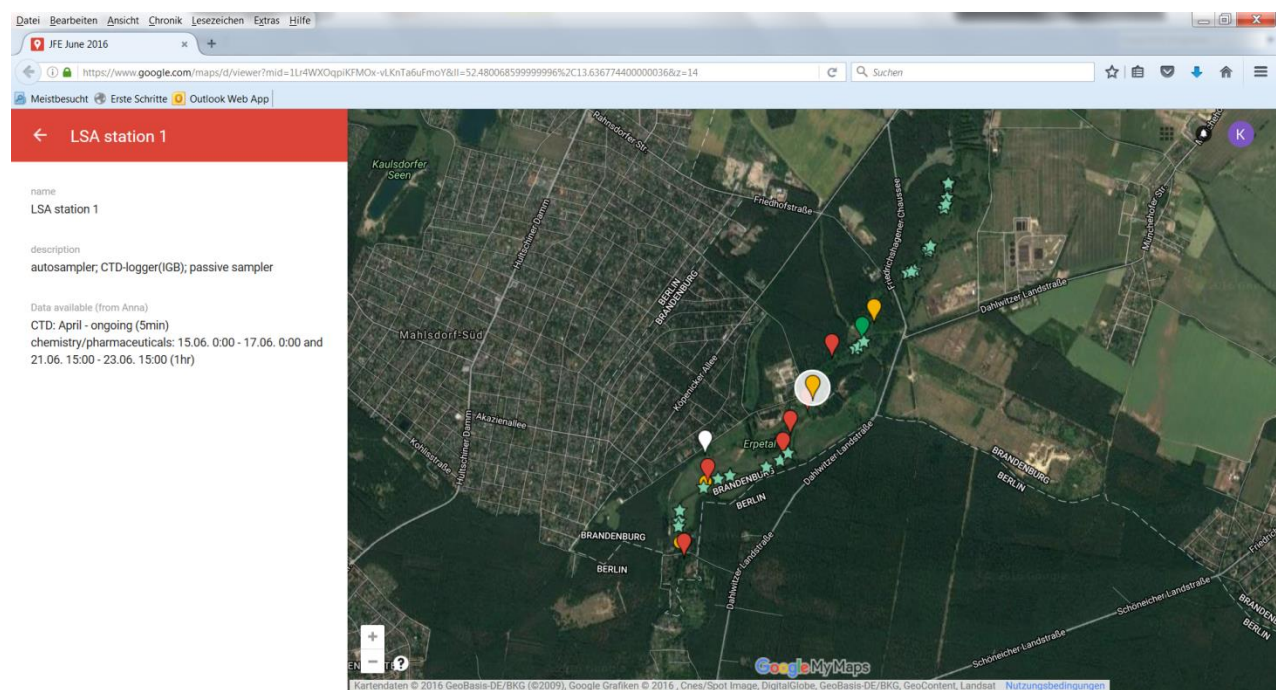


Figure 1. Overview on investigation sites of the Joint Field Experiments at the River Erpe.