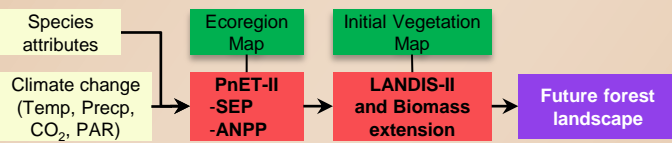


Research Objectives

- Restoring and maintaining ecological connectivity is one of the primary climate change adaptation strategies available to land managers.
- Understanding disturbance and recovery of forest landscape is a challenge because of complex interactions over a range of temporal and spatial scales.
- How does climate change affect forest aboveground biomass and species composition in Korea?**

Schematic of the study

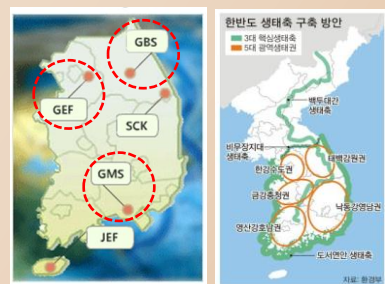
- Quantify the effect of multiple disturbances and climate change on aboveground biomass and species composition using a spatially dynamic forest landscape model, LANDIS-II coupled with forest ecosystem processes model, PnET-II.



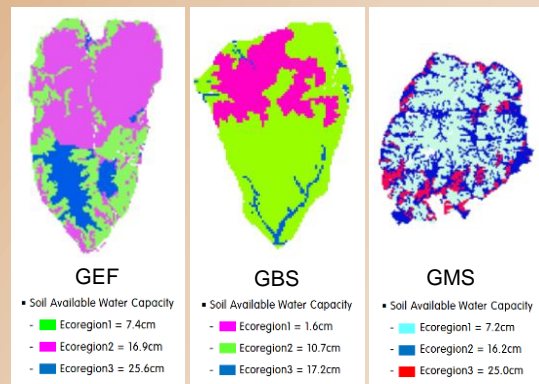
Materials and Methods



- GEF is a unique forest ecosystem reserve with little disturbance for hundreds of years.
- GBS is a typical secondary forest in rugged mountain terrain.
- GMS is located in a warm temperate coastal region.

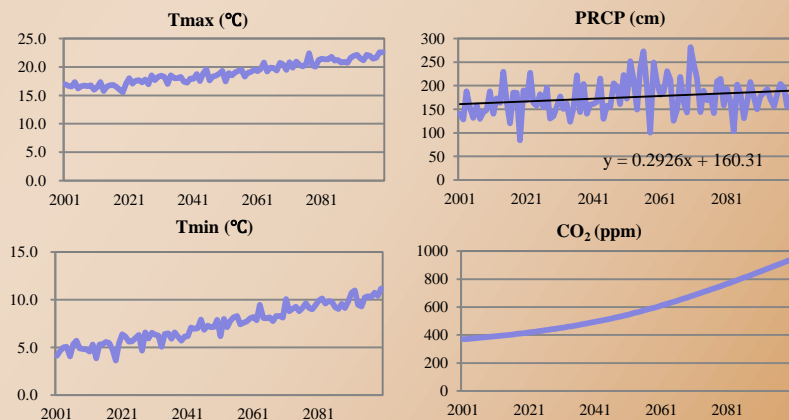


Ecoregion Map



Soil available water = field capacity – wilting point

Climate Change Scenario (RCP 8.5)



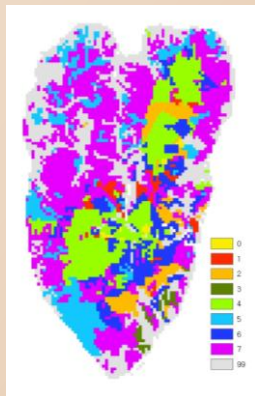
Preliminary Results and Discussions

Dominant Species

- Generally, modeled biomass in GEF increased over time
- Pinus densiflora* shows declined pattern after 2060.

Site	Species	Index
GEF	<i>Carpinus laxiflora</i>	CarpiLax
	<i>Pinus densiflora</i>	PinusDen
	<i>Quercus aliena</i>	QuercAli
GBS	<i>Quercus mongolica</i>	QuercMon
	<i>Acer pseudosieboldianum</i>	AcerPseu
	<i>Betula schmidtii</i>	BetulSch
	<i>Pinus densiflora</i>	PinusDen
GMS	<i>Tilia amurensis</i>	TiliaAmu
	<i>Quercus mongolica</i>	QuercMon
	<i>Carpinus laxiflora</i>	CarpiLax
	<i>Chamaecyparis obtusa</i>	ChameObt
	<i>Pinus densiflora</i>	PinusDen
	<i>Styrax japonicus</i>	StyraJap
	<i>Quercus serrata</i>	QuercSer

Example of Initial Vegetation Map in GEF



- >> Old Deciduous forest**
MapCode 4
CarpiLax 50 60
QuercAli 50 60
QuercMon 50 60
- >> Young Deciduous forest**
MapCode 5
CarpiLax 40
PinusDen 40
QuercAli 30 40
QuercMon 10 20 30 40
- >> Old Mixed forest**
MapCode 6
CarpiLax 60
PinusDen 50 60
QuercMon 50 60
- >> Young Mixed forest**
MapCode 7
CarpiLax 20 30 40
PinusDen 10 20 30 40
QuercAli 30 40
QuercMon 20 30 40
- >> Old Coniferous forest**
MapCode 0
PinusDen 60
- >> Young Coniferous forest**
MapCode 1
CarpiLax 30
PinusDen 40
QuercAli 20
QuercMon 10
- >> Old Pine forest**
MapCode 2
PinusDen 50 60
- >> Young Pine forest**
MapCode 3
PinusDen 30 40

